

NORTH SHORE COMMERCE CENTER

104 NE 252nd Ave. | Camas, WA

SITE SPECS

INFORMATION

- » City of Camas Jurisdiction
- » 230 Gross with ±115 Buildable Acres
- » Business Park Zoning – Office/Tech/Flex
- » School Being Built at NW Corner – Opening 2018
- » Utilities to School
- » \$22,500,000

The North Shore Commerce Center site is located in prosperous Camas, Washington, and it offers developers a unique opportunity to break ground on 230 Acres within the Urban Growth Area.

industrialgurusnw.com

CAPACITY COMMERCIAL GROUP 805 SW Broadway, Suite 700 | Portland, OR
PHONE. 503.326.9000 | E. info@capacitycommercial.com

MARK CHILDS, SIOR

503.542.4350

mark@capacitycommercial.com

DANIEL HELM

503.542.2899

dhelm@capacitycommercial.com

JEFF VALDES

503.542.2898

jeffvaldes@capacitycommercial.com

industrialgurusnw.com

CAPACITY COMMERCIAL GROUP 805 SW Broadway, Suite 700 | Portland, OR
PHONE. 503.326.9000 | E. info@capacitycommercial.com

MARK CHILDS, SIOR

503.542.4350

mark@capacitycommercial.com

DANIEL HELM

503.542.2899

dhelm@capacitycommercial.com

JEFF VALDES

503.542.2898

jeffvaldes@capacitycommercial.com

BUSINESS PARK

NORTH SHORE COMMERCE CENTER

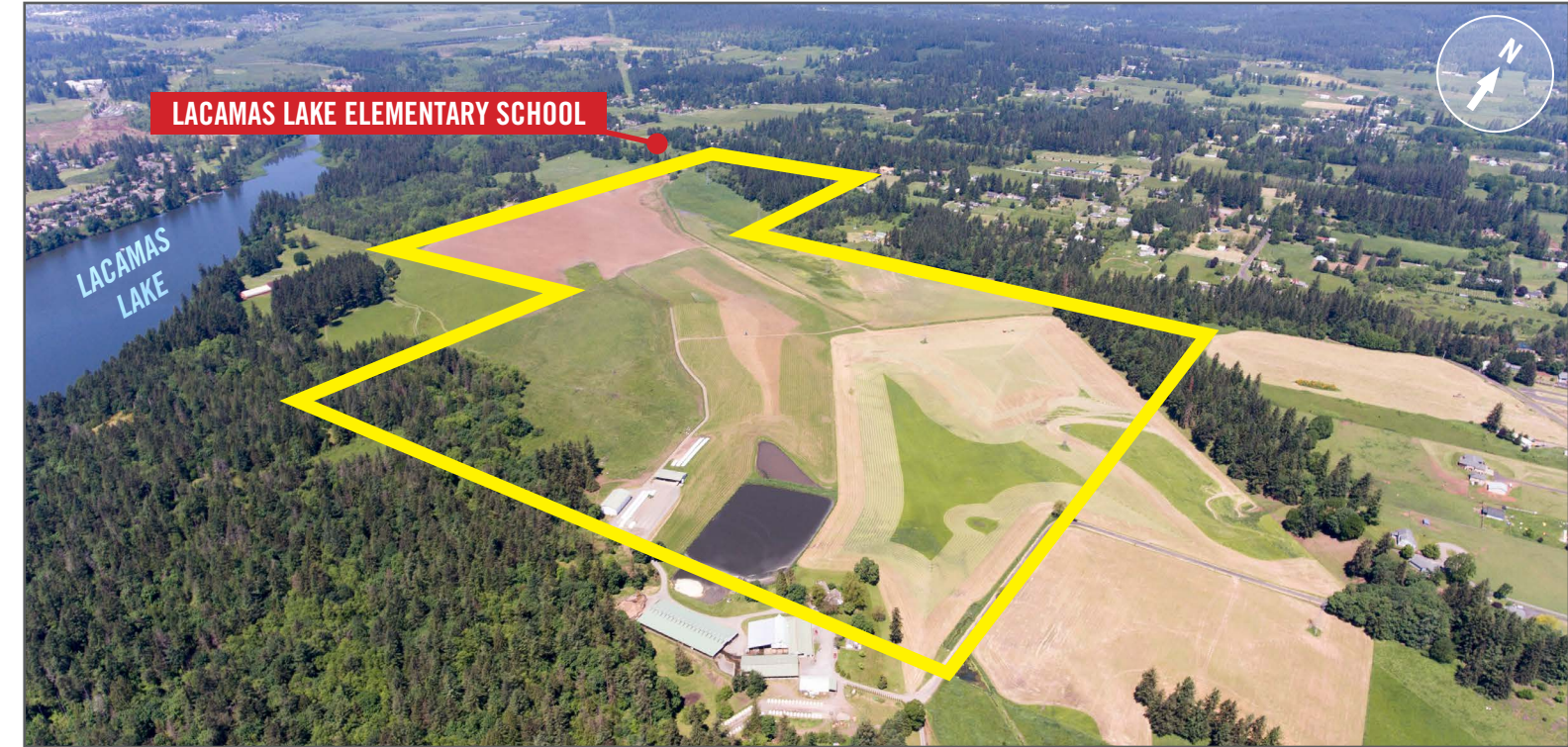
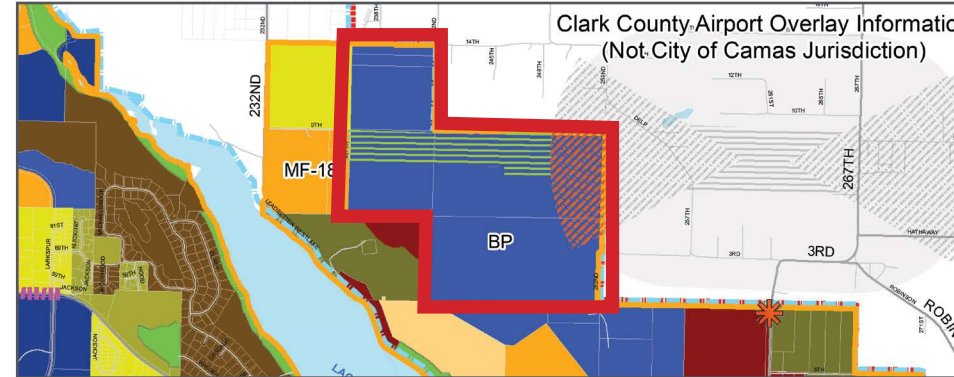


BP ZONING | ALLOWED USES

OFFICE

INDUSTRIAL

COMMERCIAL



NORTH SHORE COMMERCE CENTER

Camas is noted as one of the 10 best communities to live in the US with some of the highest rated public schools in the state of Washington. A fast-growing community with a population of 22,449 (2016), growth has increased 69.3% since 2000. There is a diversity of industries in east Clark County from manufacturing and healthcare to high-tech, with a list that includes Georgia-Pacific, Fisher Investments, Wafertech, Linear Technologies, Underwriters Laboratories and Logitech.

TOP INDUSTRIES

MANUFACTURING

HEALTHCARE & SOCIAL ASSISTANCE

RETAIL TRADE

EDUCATIONAL SERVICES

PROFESSIONAL, SCIENTIFIC & TECH

MEDIAN HOUSEHOLD INCOME
(2015)

MEDIAN HOUSEHOLD VALUE
(2015)

Camas: \$99,934

Washington: \$64,129

U.S.: \$53,889

Camas: \$353,325

Washington: \$284,000